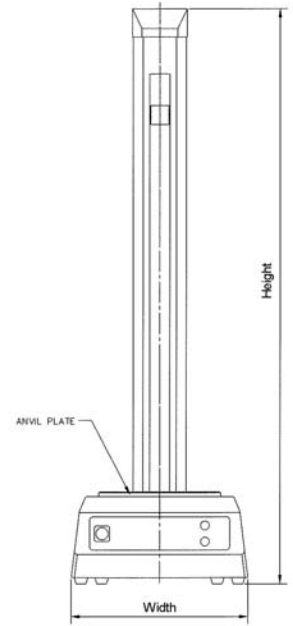
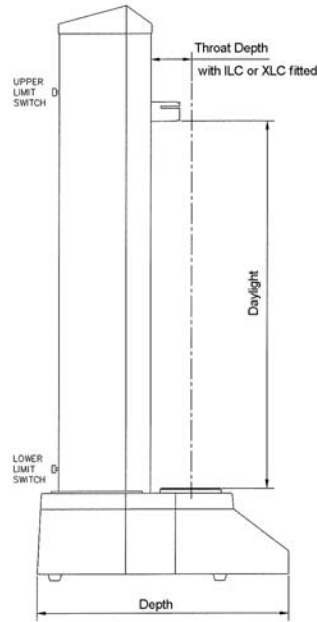
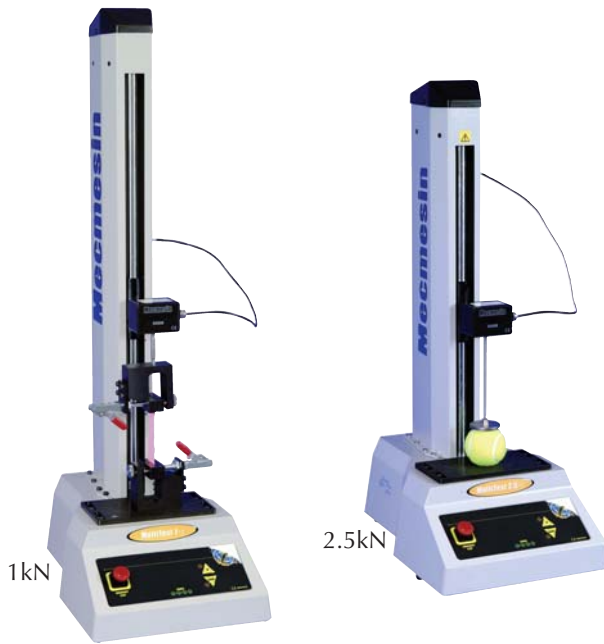




All measurements are in millimetres



	Height	Width	Depth	Daylight
<b>MultiTest 1-<i>i</i></b>	940mm	290mm	414mm	590mm
<b>MultiTest 2.5-<i>i</i></b>	750mm	290mm	414mm	410mm

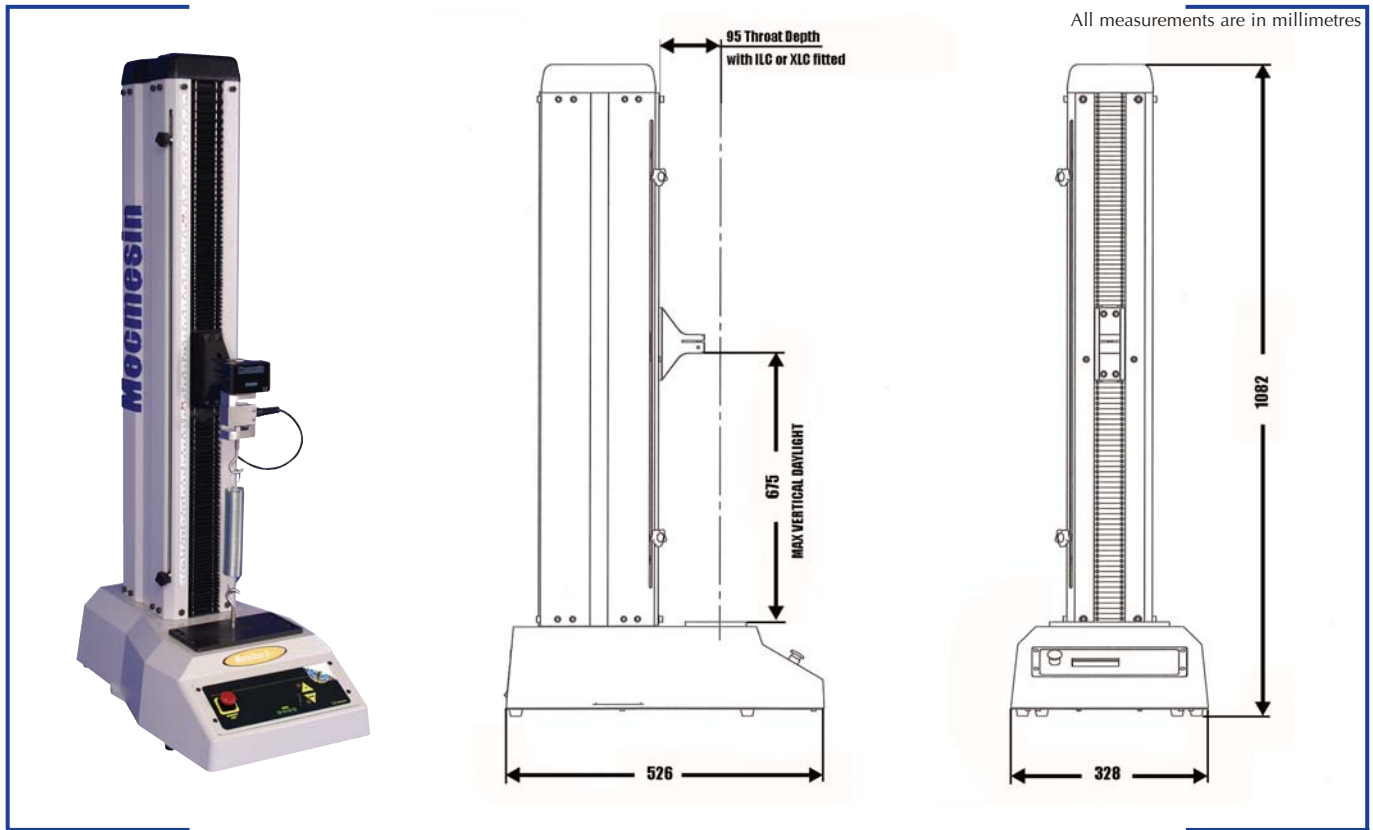
## Intelligent Loadcell ILC

**NOTE:** Compatible with all test stands of equal or higher capacity than loadcell  
Requires adaptor 432-256 to fit to MultiTest 10-*i* & 25-*i*



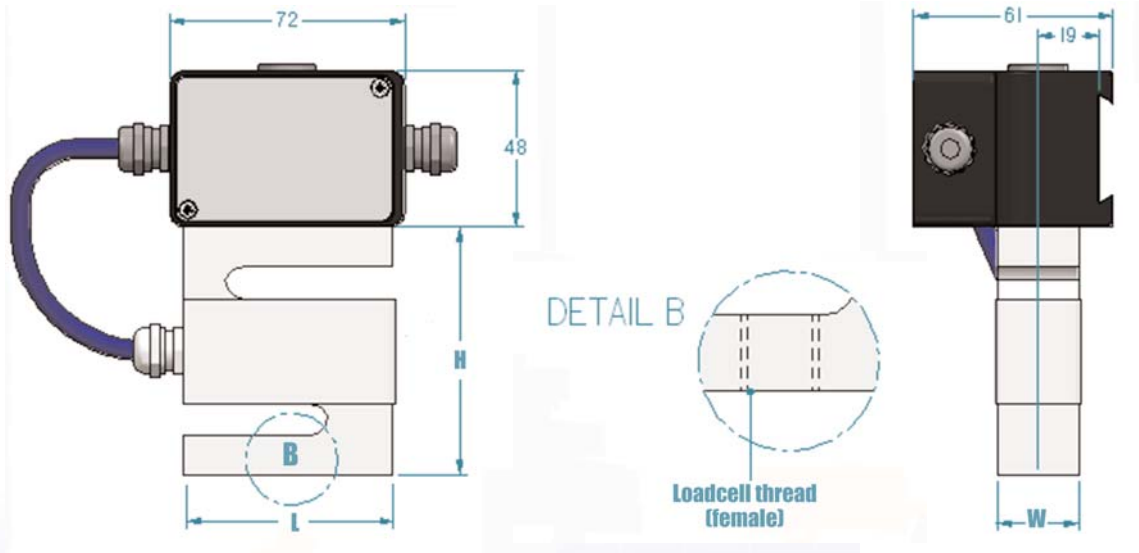
All measurements are in millimetres

ILC capacity	Part No.	Thread	Overall daylight reduction	Loadcell length (L)	Loadcell width (W)	Loadcell height (H)	Total daylight reduction using twin-column dovetail (432-256)
2N	879-009	#10-32UNF	15	72	46.5	48	99
5N	879-010	#10-32UNF	15	72	46.5	48	99
10N	879-001	#10-32UNF	15	72	46.5	48	99
25N	879-002	#10-32UNF	15	72	46.5	48	99
50N	879-003	#10-32UNF	15	72	46.5	48	99
100N	879-004	#10-32UNF	15	72	46.5	48	99
250N	879-005	#10-32UNF	15	72	46.5	48	99
500N	879-006	#10-32UNF	15	72	46.5	48	99



## Intelligent Loadcell ILC-S

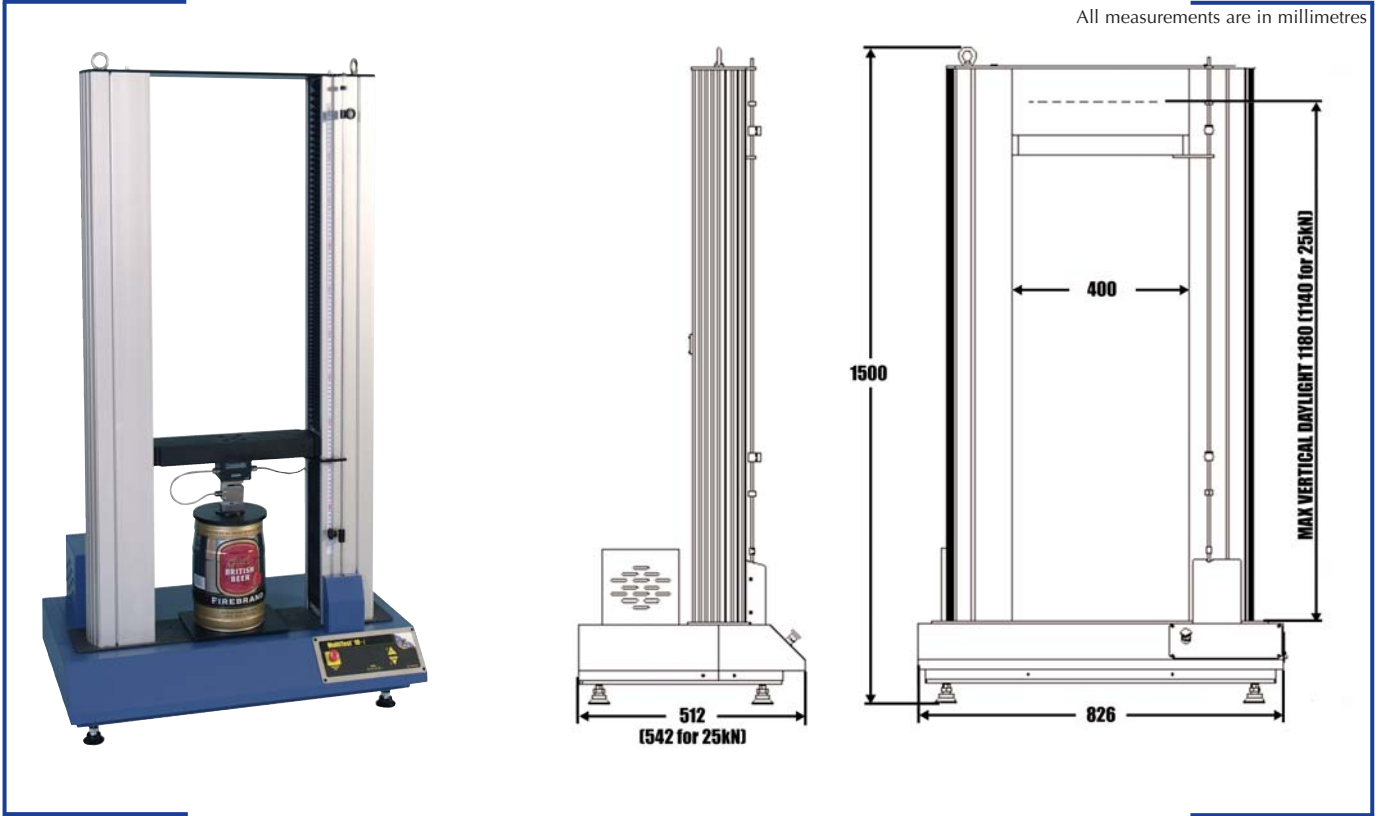
**NOTE:** Compatible with all test stands of equal or higher capacity than loadcell  
Requires adaptor 432-256 to fit to MultiTest 10-i & 25-i



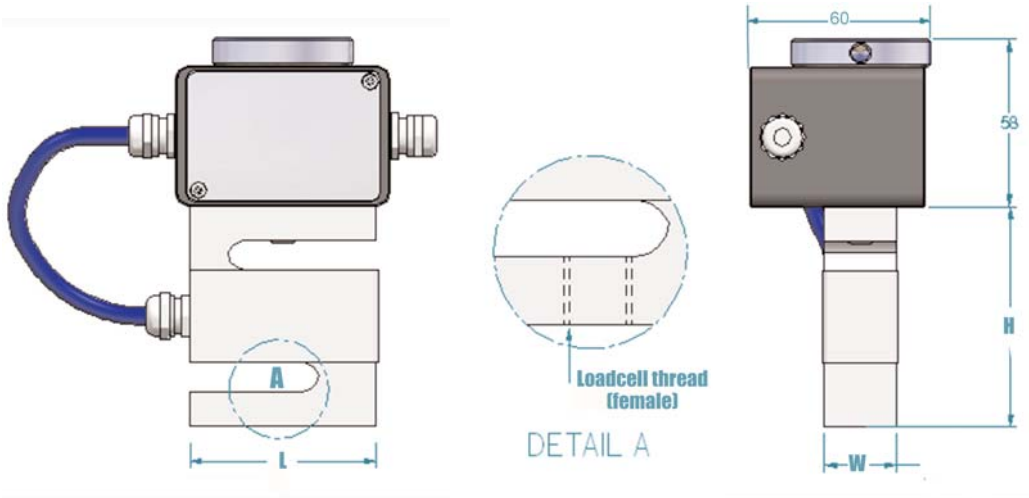
All measurements are in millimetres

ILC-S capacity	Part No.	Thread	Overall daylight reduction	Loadcell length (L)	Loadcell width (W)	Loadcell height (H)	Total daylight reduction using twin-column dovetail (432-256)
100N	879-064	M6 x 1	70	51	13	64	154
200N	879-065	M6 x 1	70	51	13	64	154
500N	879-066	M6 x 1	82	51	19	76	166
1000N	879-067	M10 x 1.5	82	51	19	76	166
2500N	879-008	M12 x 1.75	82	51	25	76	166
5000N	879-024	M12 x 1.75	82	51	25	76	166

All measurements are in millimetres



## Intelligent Loadcell ILC-T



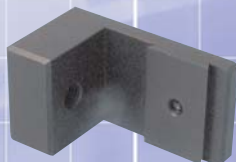
All measurements are in millimetres

ILC-T capacity	Part No.	Thread	Overall daylight reduction	Loadcell length (L)	Loadcell width (W)	Loadcell height (H)
10kN	879-025	M12 x 1.75	134	51	25	76
25kN	879-026	M16 x 2	147	76	38	89

## Twin-Column Dovetail Adaptor

NOTE: For use with ILC and ILC-S  
Supplied as standard with MultiTest 10-*i* & 25-*i*

Rated capacity	Part No.
5kN	432-256



## Load Measurement Accuracy

% of full scale(fs)	N
±0.1% fs	2 - 2500N
±0.2% fs	5000 - 25000N